

3.4

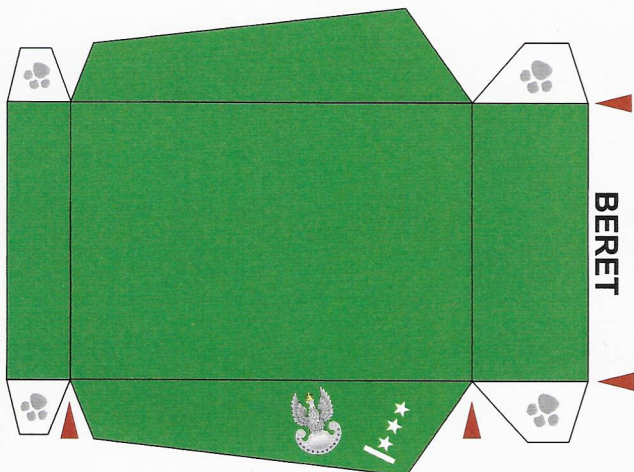
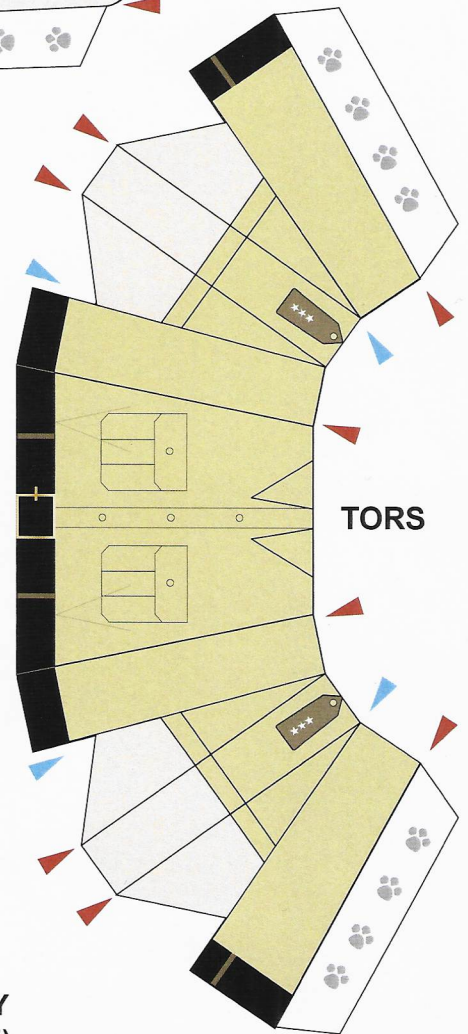
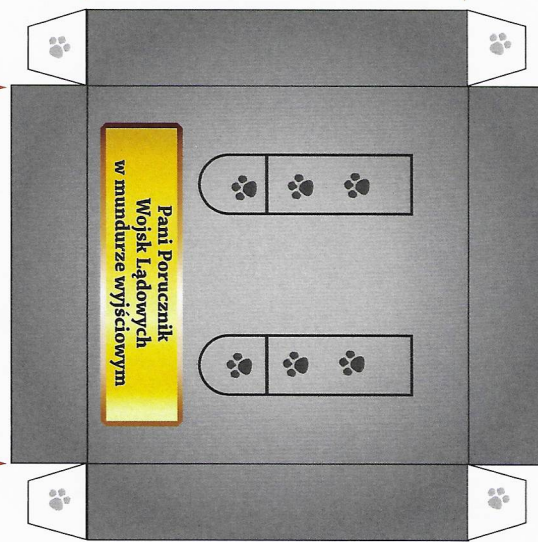
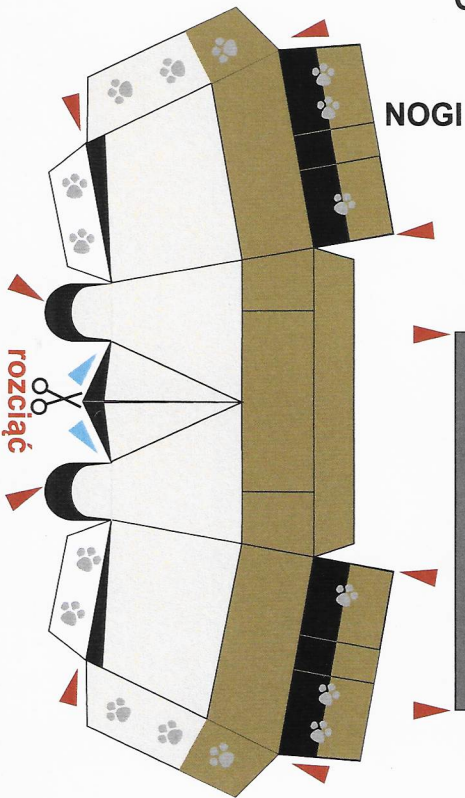
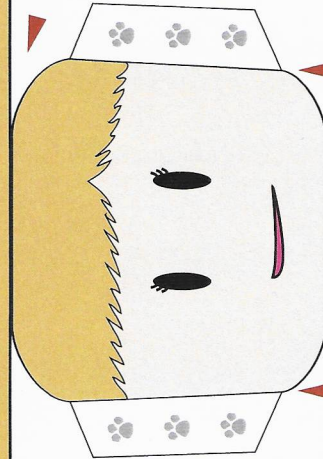
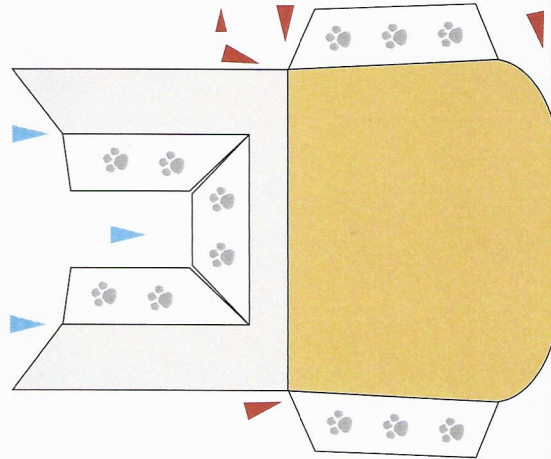
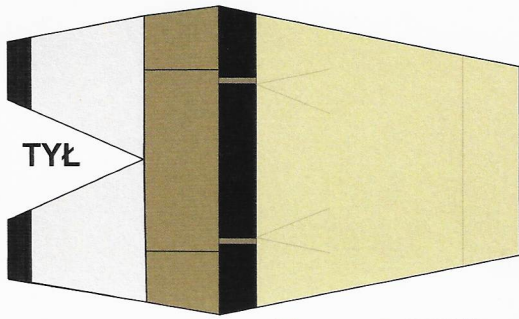


Pani Porucznik Wojsk Lądowych w mundurze wyjściowym

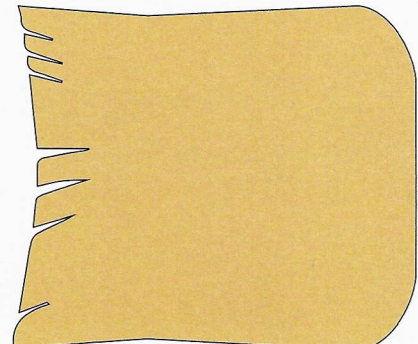
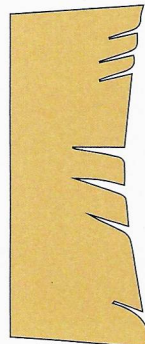
miejsce
klejenia

zagiąć

zagiąć
do siebie



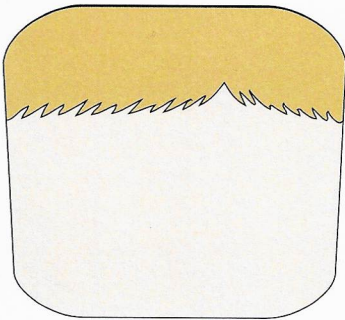
DŁUGIE WŁOSY
(OPCJONALNIE)



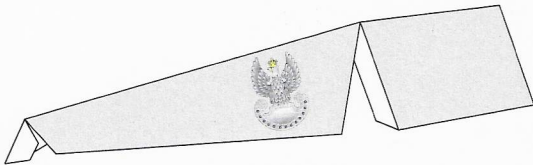
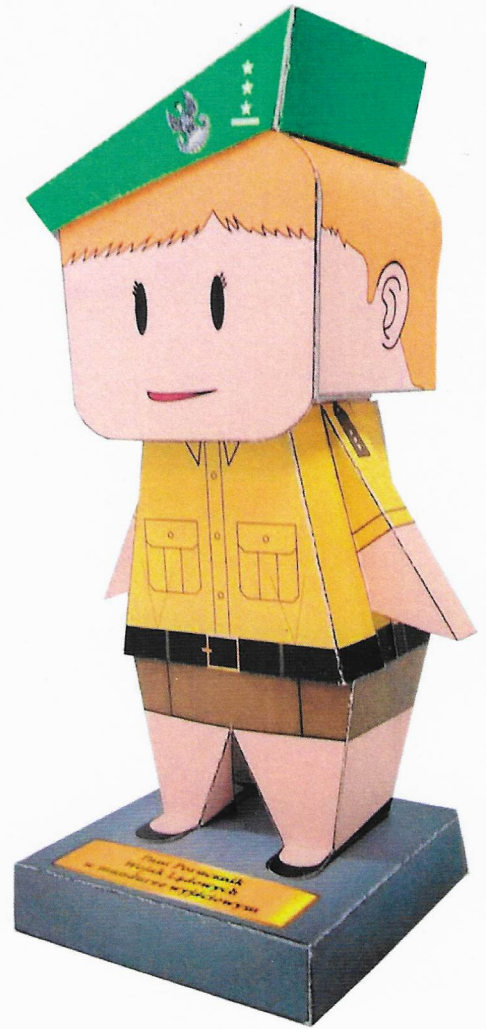


3.4
Opracowano
w Klubie DG RSZ

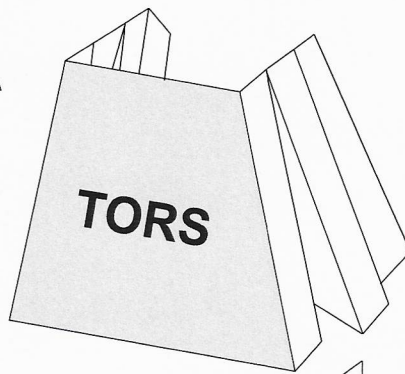
**PANI PORUCZNIK
WOJSK LĄDOWYCH
W MUNDURZE
WYJŚCIOWYM
(INSTRUKCJA)**



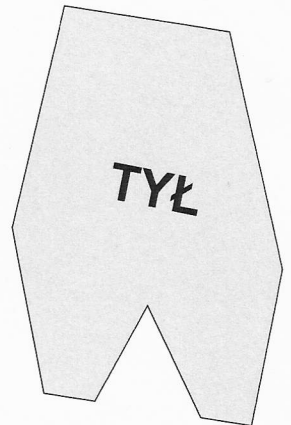
Zaprasowa twarz
do namalowania
własnej



BERET



TORS



TYŁ



GŁOWA



NOGI

PODEST