


# 3.1

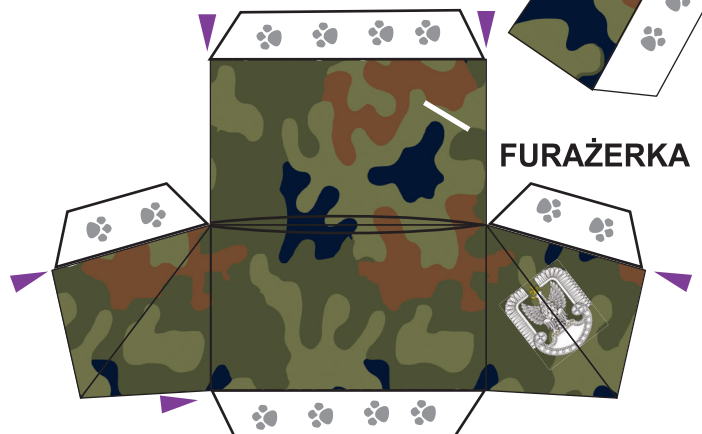
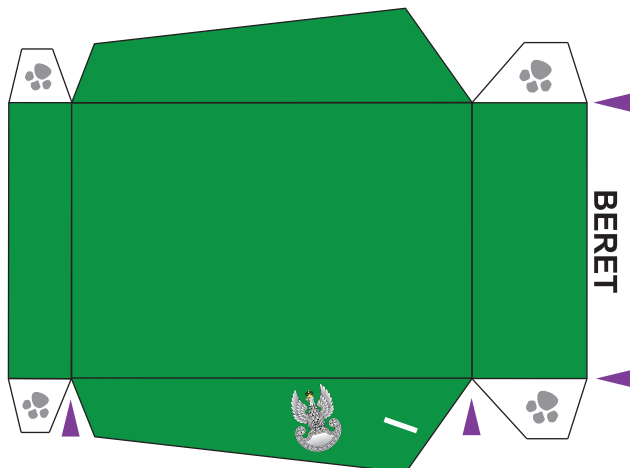
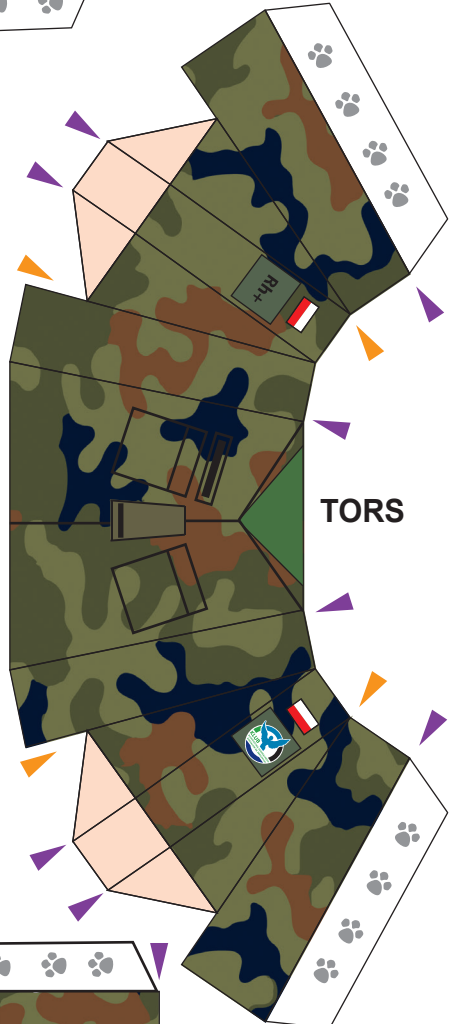
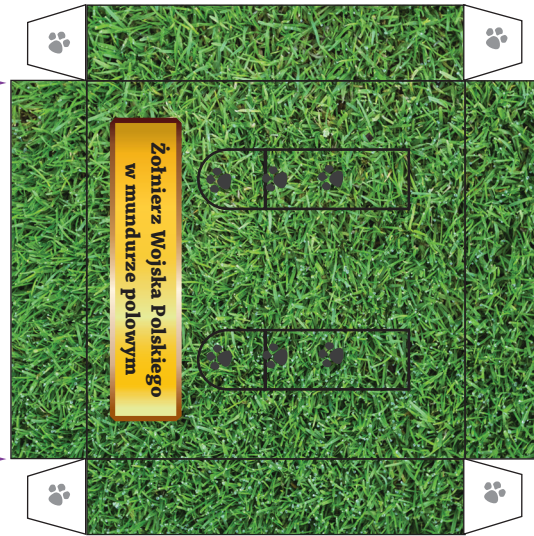
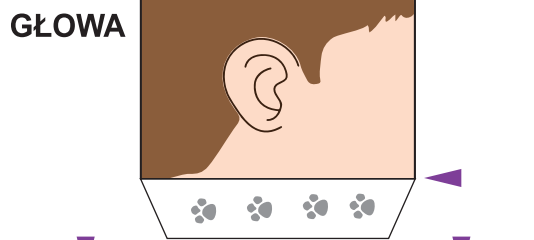
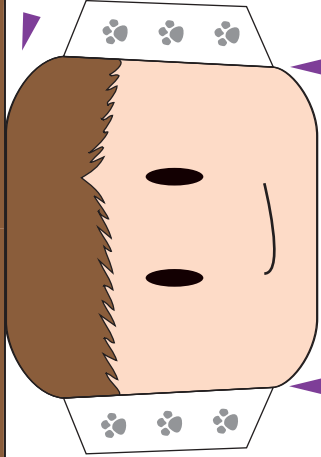
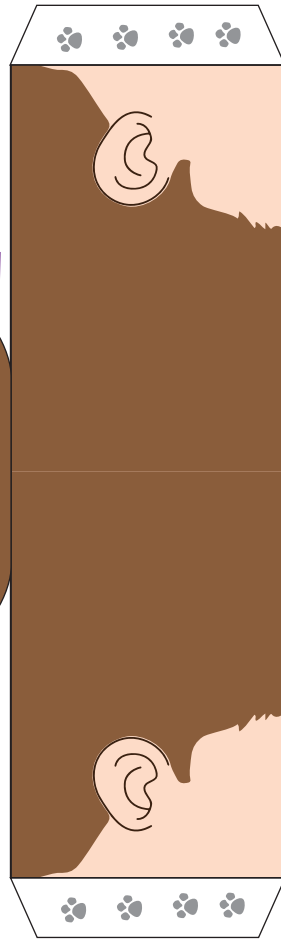
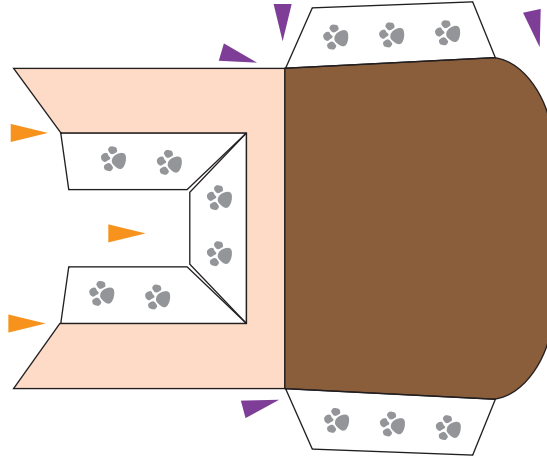
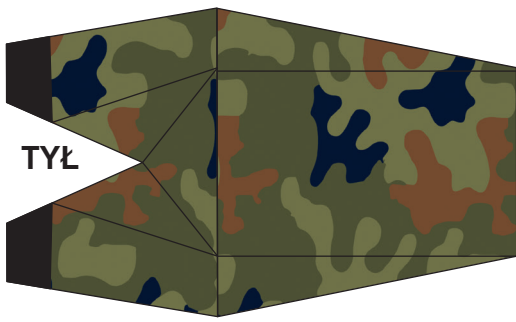


## Żołnierz Wojska Polskiego w mundurze polowym

miejsce klejenia 

zagiąć 

zagiąć do siebie 

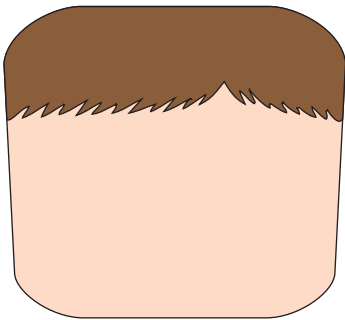




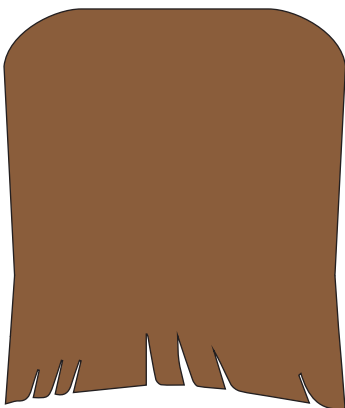
# 3.1

Opracowano  
w Klubie DG RSZ

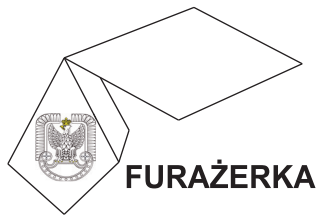
## ŻOŁNIERZ WOJSKA POLSKIEGO W MUNDURZE POLOWYM



Zaprasowa twarz  
do namalowania  
własnej



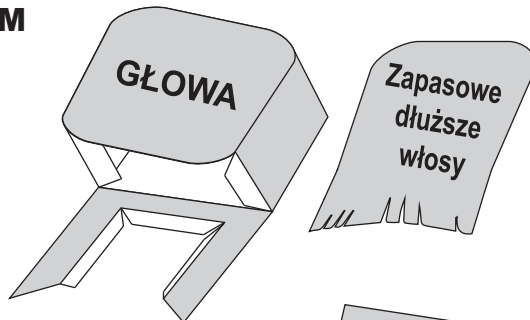
Nakleić z tyłu  
głowy żeby  
otrzymać  
żołnierkę



FURAŻERKA

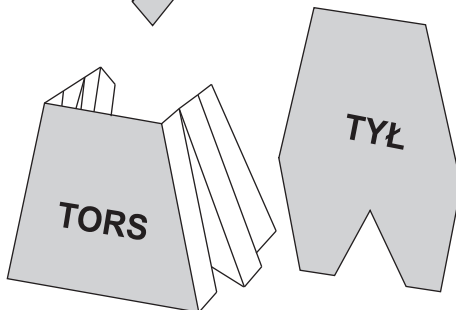


BERET



GŁOWA

Zaprasowe  
dłuższe  
włosy



TORS

TYŁ



NOGI

PODEST

